

Procedure to Customize the FTDI USB Interface

Gordon Anderson
December 2011

Background

- This procedure will set the FTDI USB interface chip parameters. The following values are set:
 - Product Description = MicroStar 2000
 - Manufacture = GAACE
 - Max Bus Power = 500 mAmps
- These modifications allow the PC application to automatically locate the MicroStar encoder and assign the port. The increased Bus Power allows charging the transmitter's battery using the USB port power. This charging option does require hardware modifications.

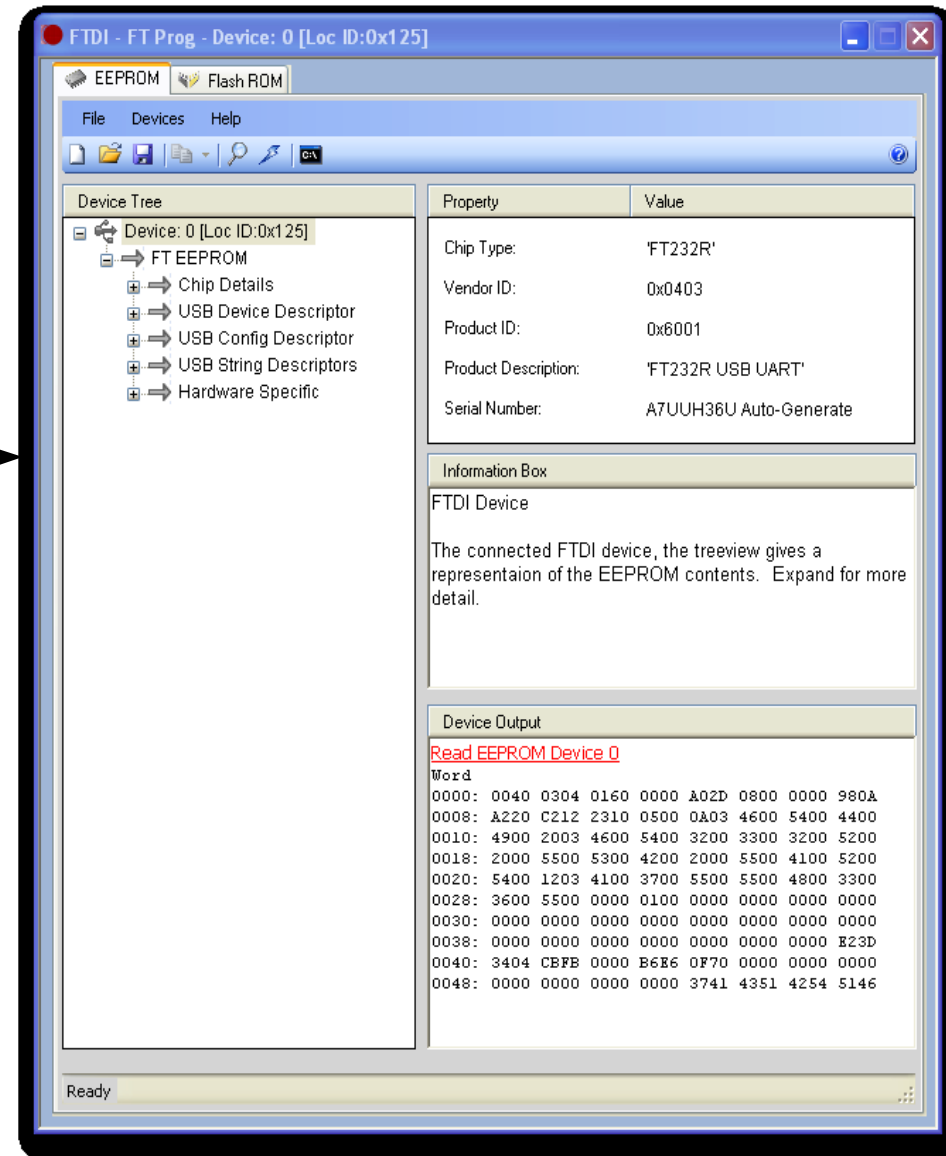
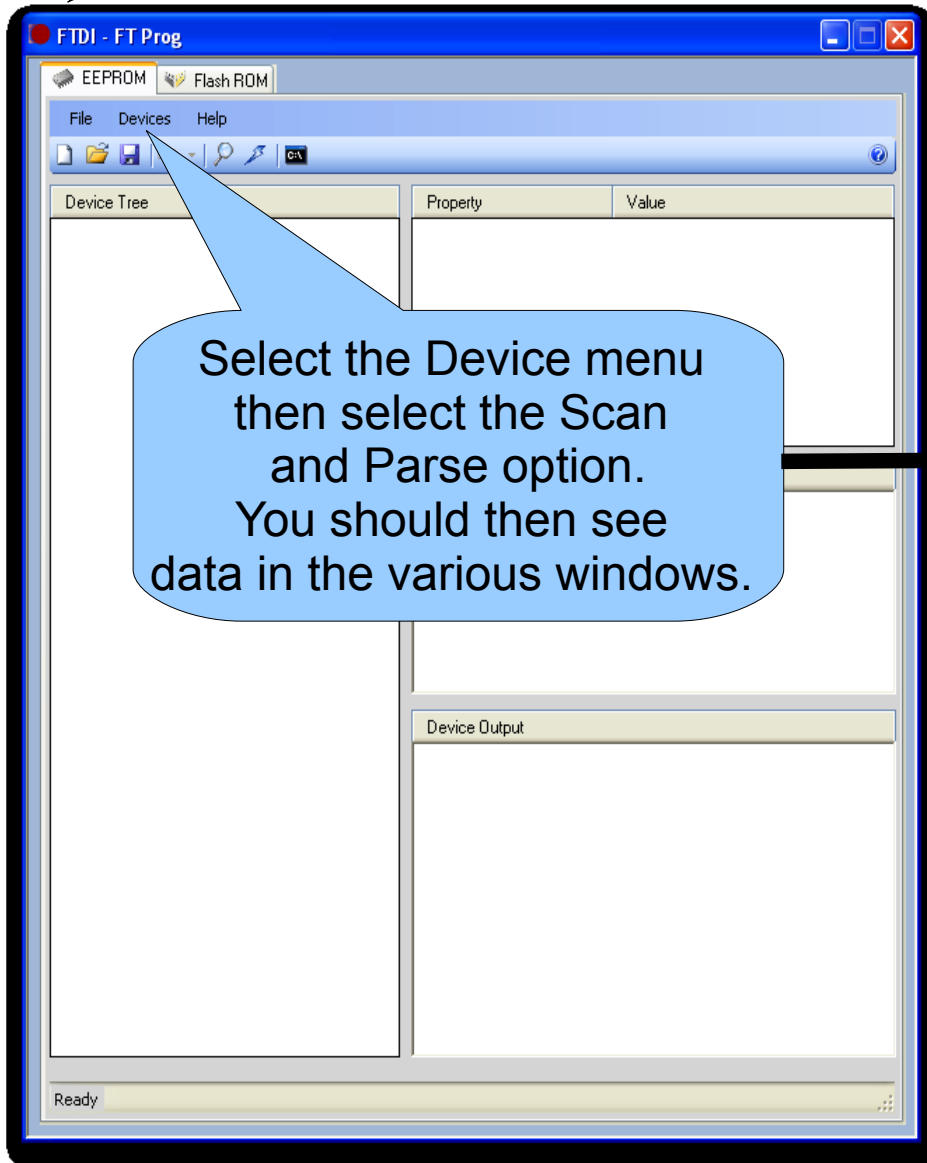
What you need to complete the procedure

- Download and install the FT_Prog utility
http://www.ftdichip.com/Support/Utilities/FT_Prog_v2.4.2.zip
- Technical data regarding FT_Prog utility
http://www.ftdichip.com/Support/Utilities.htm#FT_Prog
- You will also need the MicroStar2000.xml template file that is available on the MicroStar web site in the download section.
<http://www.mstar2k.com>
- Install the FTDI drivers and connect the USB connector to the MicroStar Encoder. The Encoder does not need to be powered on for the following steps

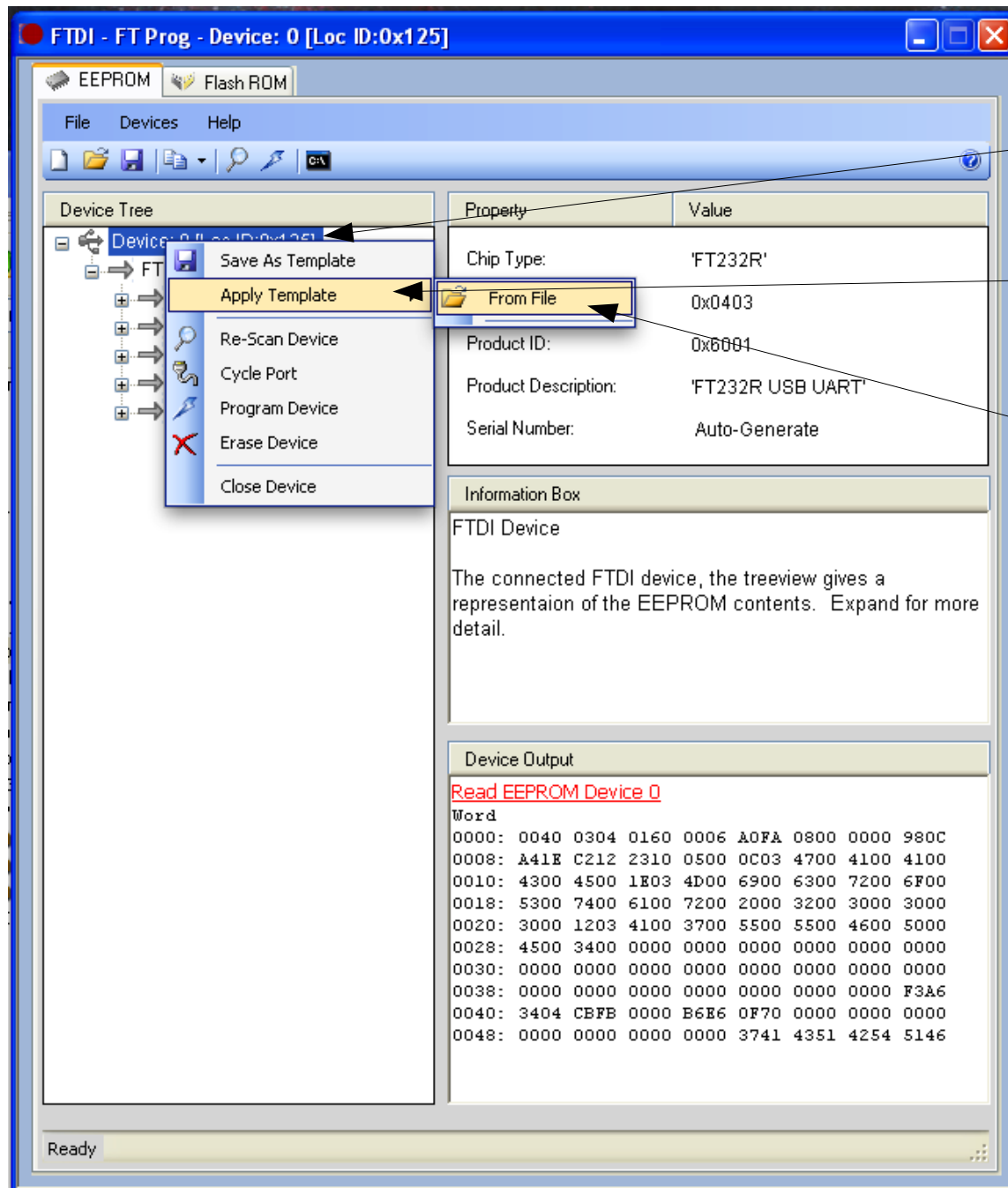
Start FT_Prog and read the device

Start FT_Prog and then you should see this dialog box.

Select the Device menu then select the Scan and Parse option. You should then see data in the various windows.



Load the MicroStar2000.xml Template



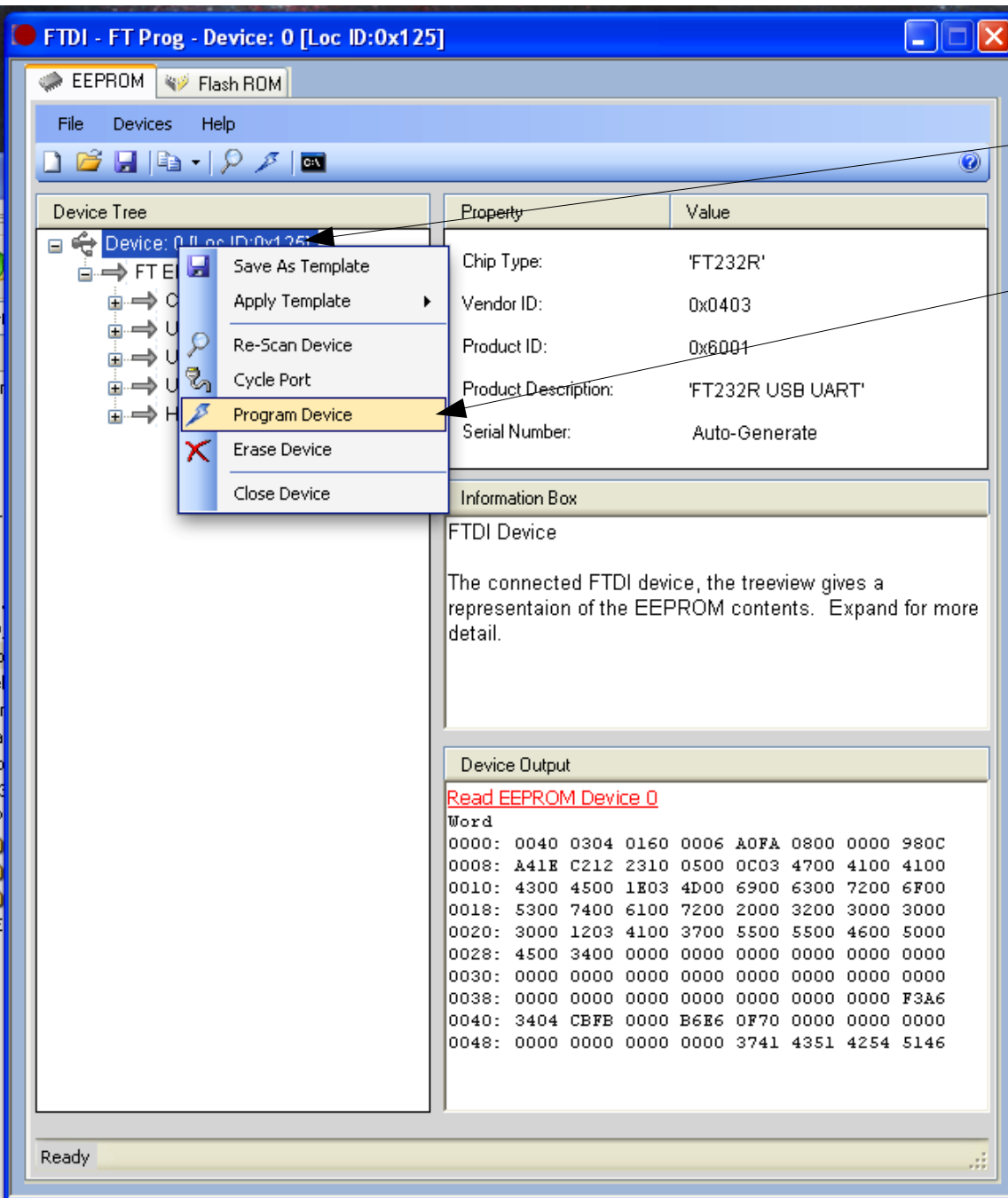
Right click on the device and this popup menu will appear.

Next select Apply Template.

Then Select From File. A file selection dialog box will appear and you should select the MicroStar2000.xml file.

After the file is selected you should see a dialog box indicating the template was loaded.

Program the device

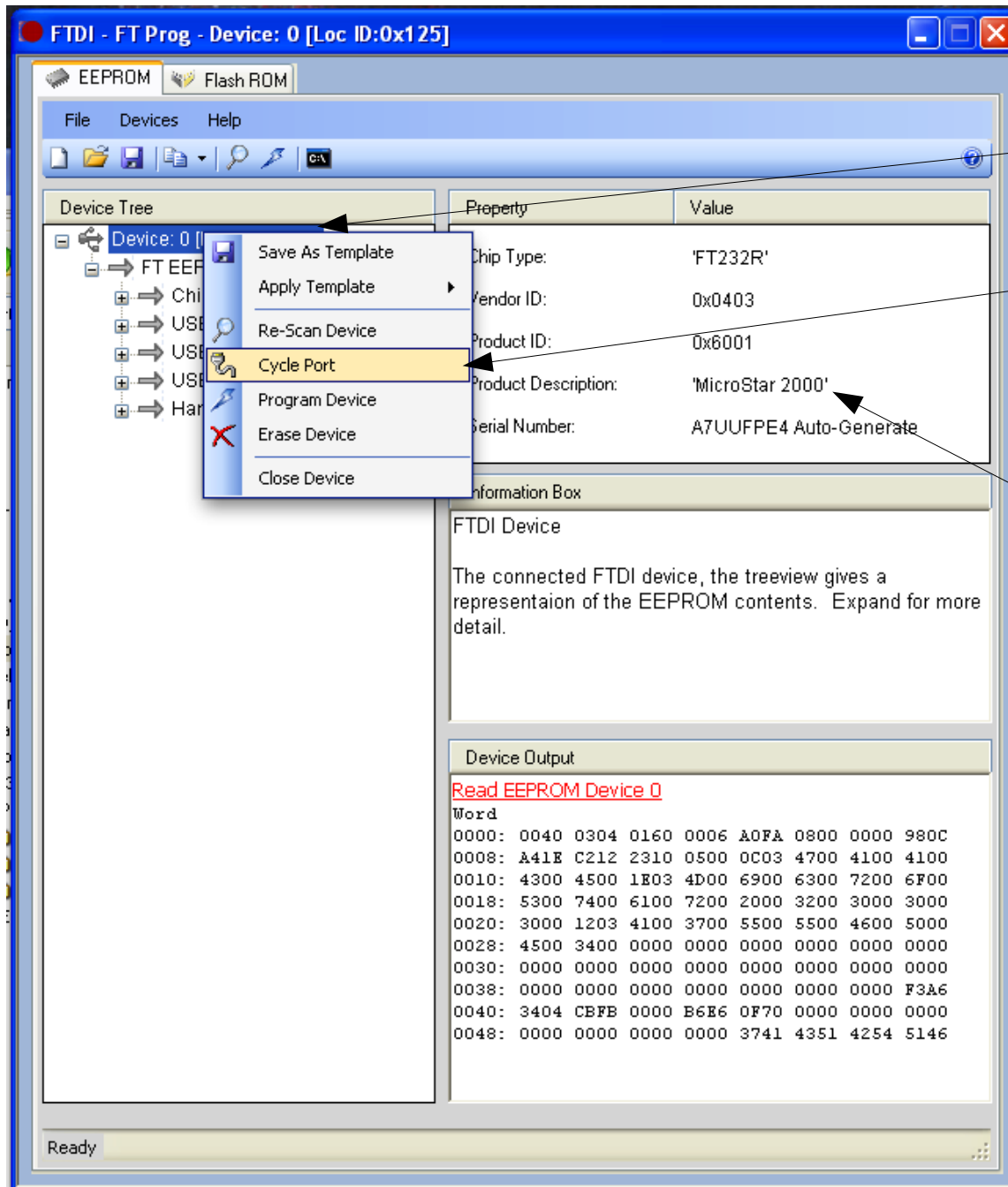


Right click on the device and this popup menu will appear.

Next select Program Device.

After this option is selected the device will be programmed, this will take a few seconds.

Reset the device



Right click on the device and this popup menu will appear.

Next select Cycle Port.

After this option is selected the device will be reset.

This completes the procedure. You See MicroStar 2000 in this location if everything worked.

You can use windows device manager To adjust the port number if needed.